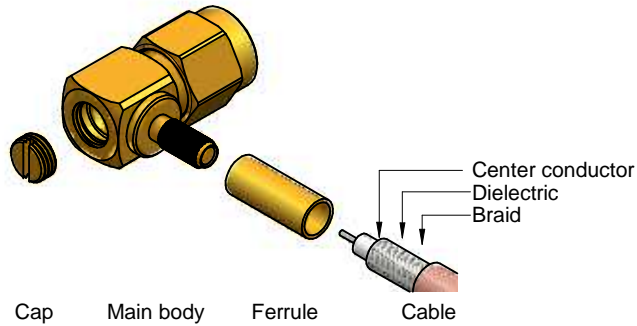
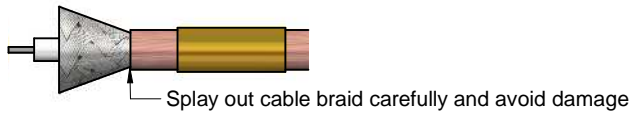


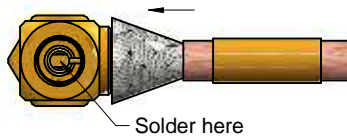
**Step 1.** Prepare connector components and strip coaxial cable according to given dimensions (check point 1)



**Step 2.** Please slide ferrule onto cable and splay out cable braid



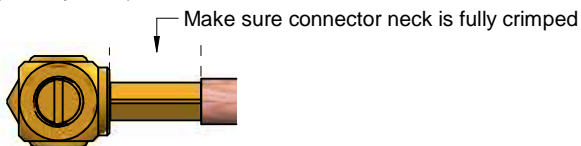
**Step 3.** Insert cable into connector main body until cable dielectric is attached to connector internal positioning point. Check and make sure cable center conductor sits inside solder slot. Solder cable center conductor using minimum amount of solder paste (check point 2)



**Step 4.** Cover cable braid over connector neck and push ferrule toward main body. Screw the cap on to connector slowly (check point 3)



**Step 5.** Crimp ferrule with tool hex size : .151" (check point 4)



**Assembly Method :**

Center contact : Soldered  
Outer contact : Crimp

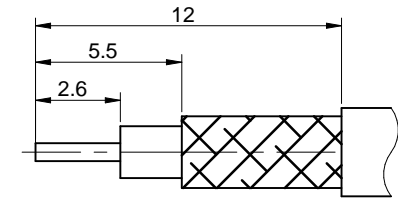
**Crimp Tool PN :** 600600

**Crimp Head PN :** 60060060101



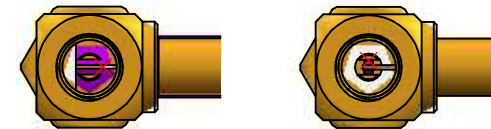
**Cable Type :** Flexible Cable RG316 Double Braid

**Cable Strip Dimensions (mm) :**



**Check Point :**

1. No components damage and no cable splits after stripping
2. No excess or lack solder flow, no evidence of melting



3. Remove or cut exposed cable braid with scissor or utility knife



4. No significant dog ear after crimping



Würth Elektronik eiSos GmbH & Co. KG  
EMC & Inductive Solutions

Max-Eyth-Str. 1  
74638 Waldenburg  
Germany  
com. +49 79 42 945 - 0

www.we-online.de  
eiSos@we-online.de



CREATED  
BMa

CHECKED  
JCh

DESCRIPTION

**Assembly instructions**

**603 360 212 106 20**

REVISION

STATUS

DATE

2019-12-03

BUSINESS UNIT

eiCan